

SPICE-Equivalent circuit model library

Table 1. Equivalent circuit data

Part Number	L (μ H)	F _{res} (MHz)	C1 (pF)	R1 (Ω)	R2 Nominal DCR of winding (Ω)
HCM0703-R15-R	0.15	158.7	6.70	3549.03	0.0019
HCM0703-R22-R	0.22	129.6	6.86	3920.63	0.0025
HCM0703-R47-R	0.47	86.7	7.18	4776.07	0.004
HCM0703-R68-R	0.68	71.3	7.34	5257.48	0.005
HCM0703-R82-R	0.82	64.5	7.42	5519.72	0.0067
HCM0703-1R0-R	1	58.1	7.51	5812.00	0.009
HCM0703-1R5-R	1.5	46.8	7.69	6458.17	0.014
HCM0703-2R2-R	2.2	38.2	7.87	7134.37	0.018
HCM0703-3R3-R	3.3	30.8	8.07	7927.55	0.028
HCM0703-4R7-R	4.7	25.6	8.24	8691.03	0.037
HCM0703-6R8-R	6.8	21.0	8.42	9567.05	0.054
HCM0703-8R2-R	8.2	19.0	8.52	10044.24	0.064
HCM0703-100-R	10	17.1	8.62	10576.10	0.071
HCM0703-150-R	14.9	13.9	8.83	11731.51	0.113
HCM0703-220-R	22	11.3	9.04	12982.42	0.135
HCM0703-330-R	33	9.1	9.26	14425.78	0.22

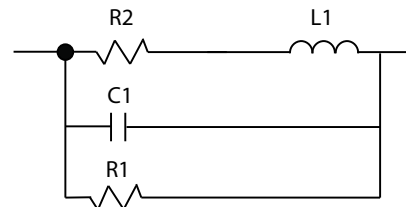


Figure 1. Equivalent circuit

Disclaimer

The data provided is for reference and is intended for evaluation purposes only. Users should verify all intended results in the end application.

Eaton
Electronics Division
 1000 Eaton Boulevard
 Cleveland, OH 44122
 United States
www.eaton.com/electronics

© 2018 Eaton
 All Rights Reserved
 Printed in USA
 Publication No. HCM0703 Spice
 April 2018