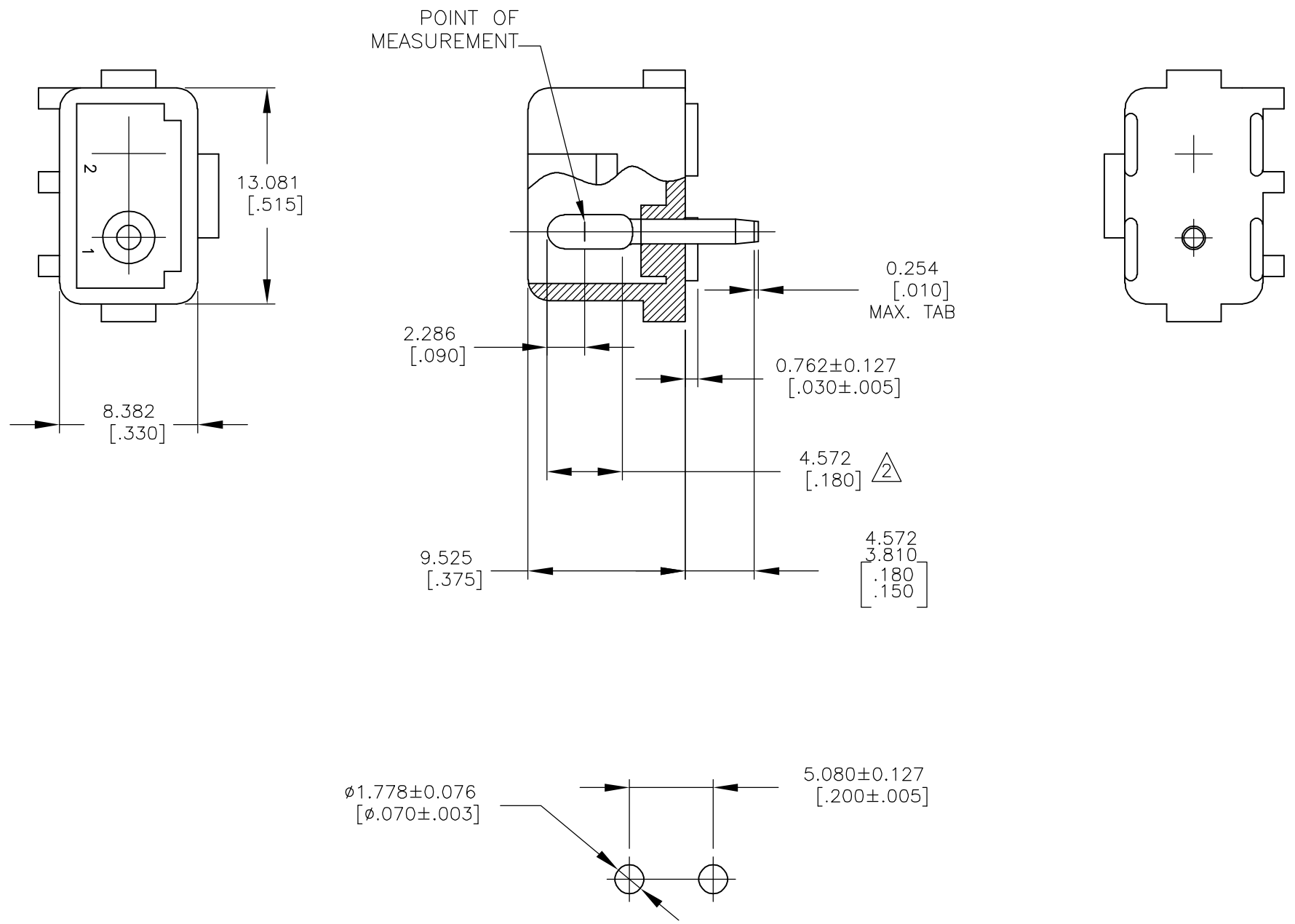


THIS DRAWING IS UNPUBLISHED. RELEASED FOR PUBLICATION  
 © COPYRIGHT 1586512 BY TYCO ELECTRONICS CORPORATION. ALL RIGHTS RESERVED.

LOC	DIST	REVISIONS					
CM	00	P	LTR	DESCRIPTION	DATE	DWN	APVD
		0		RELEASED PER 0G3B-1134-04	10OCT05	HMR	-



1. PARTS MUST COMPLY WITH SOLDERABILITY SPEC. 109-11-3.

$\Delta$  CONTACT IS PLATED OVERALL WITH .000050 NICKEL, THEN .000030 GOLD OVER CONTACT LENGTH INDICATED AND MATTE TIN ON SOLDER TAIL END.

RECOMMENDED LAYOUT FOR  
 1.575[.062] THICK P.C. BOARD

1586530-2	NYLON-NAT.	COPPER ALLOY-GOLD $\Delta$
ASSEMBLY NO.	HSG, MATL& COLOR	PIN MATL & FINISH

THIS DRAWING IS A CONTROLLED DOCUMENT.		DWN RAGHU 10OCT2005	Tyco Electronics Corporation Harrisburg, PA 17105-3608	
DIMENSIONS: mm [INCHES]	TOLERANCES UNLESS OTHERWISE SPECIFIED:	CHK -	NAME	
	0 PLC ± -	APVD -	2 CIRCUIT COMMERCIAL MATE-N-LOK (TM) HEADER	
	1 PLC ± -	PRODUCT SPEC -		
	2 PLC ± -	APPLICATION SPEC -		
	3 PLC ± -	WEIGHT -	SIZE A3	CAGE CODE 00779
4 PLC ± -	ANGLES ± -			RESTRICTED TO -
MATERIAL SEE TABLE	FINISH SEE TABLE			SCALE 3:1
		CUSTOMER DRAWING		SHEET 1 OF 1
				REV 0

**METRIC**