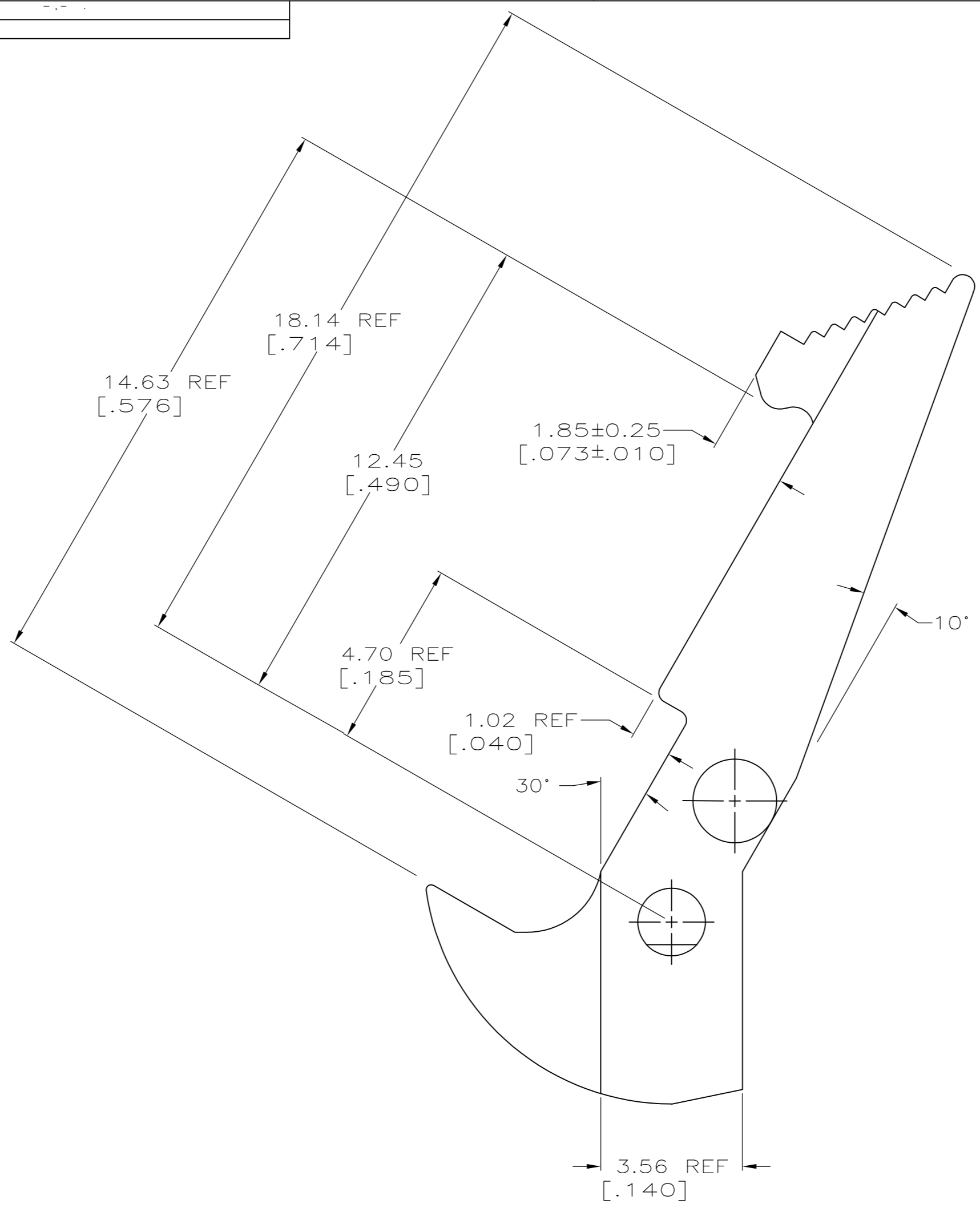
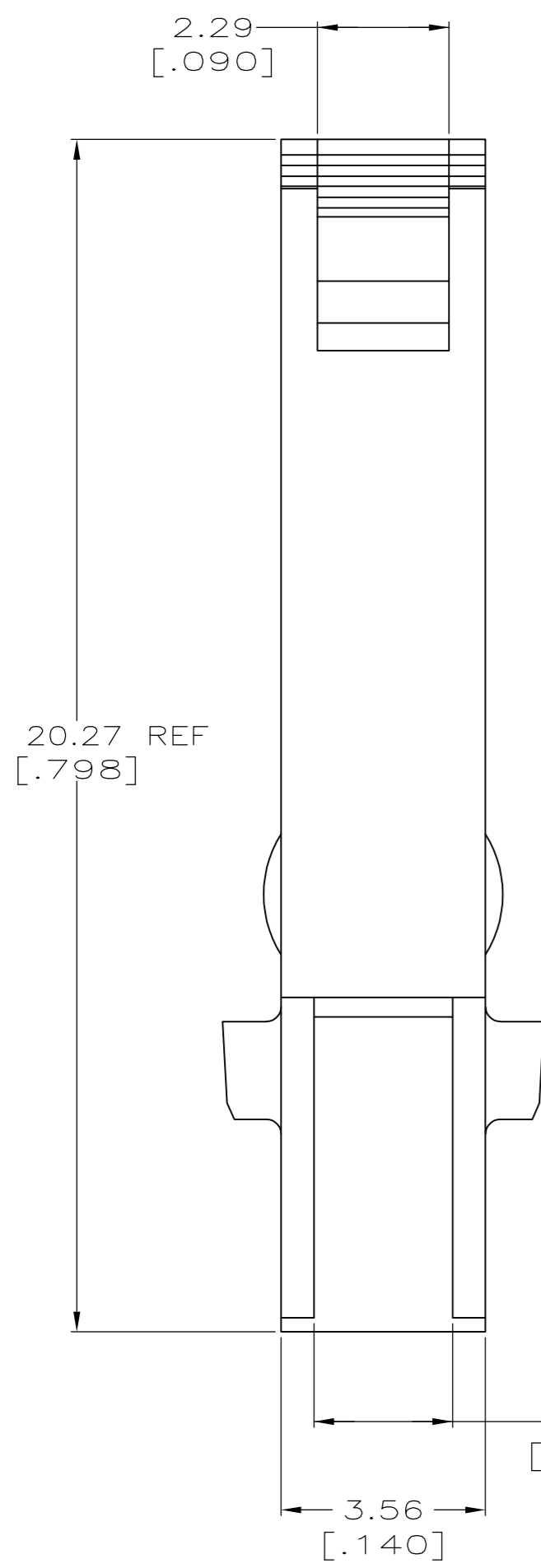


THIS DRAWING IS UNPUBLISHED. RELEASED FOR PUBLICATION  
 © COPYRIGHT - By - ALL RIGHTS RESERVED.

LOC	DIST	REVISIONS			
P	LTR	DESCRIPTION	DATE	OWN	APVD
GP	00	F1	REVISED PER ECO-11-004835	11MAR11	RK HMR



1. TO BE USED WITH AMP-LATCH™ UNIVERSAL HEADER WHICH MATES WITH AMP-LATCH™ CONNECTOR WITH STRAIN RELIEF COVER.

BLUE	102320-3
BLACK	102320-1
COLOR	PART NO

THIS DRAWING IS A CONTROLLED DOCUMENT.		DWN	D.GELTZ	07/08/92	TE Connectivity NAME LATCH, UNIVERSAL HEADER, AMP-LATCH
DIMENSIONS: MM[INCHES]		CHK	R.STONE	7-10-92	
TOLERANCES UNLESS OTHERWISE SPECIFIED:		APVD	R.KILE	7-13-92	
0 PLC ± - 1 PLC ± - 2 PLC ± 0.13 [.005] 3 PLC ± - 4 PLC ± - ANGLES ± ± 1°		PRODUCT SPEC		APPLICATION SPEC	
MATERIAL FLAME RETARDANT PBT, UL94V-0 RATED		FINISH		WEIGHT	SIZE A2 CAGE CODE 00779 DRAWING NO G-102320 RESTRICTED TO -
THIS DRAWING IS A CONTROLLED DOCUMENT FOR AMP INCORPORATED. IT IS SUBJECT TO CHANGE AND THE CONTROLLING ENGINEERING ORGANIZATION SHOULD BE CONTACTED FOR THE LATEST REVISION.		CUSTOMER DRAWING		SCALE 10:1	SHEET 1 of 1 REV F1