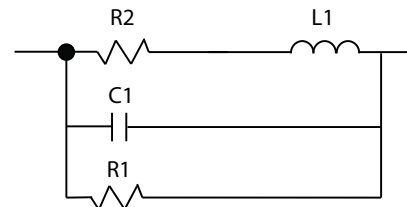


# SPICE-Equivalent circuit model library

**Table 1.** Equivalent circuit data

Part Number	L ( $\mu$ H)	F <sub>res</sub> (MHz)	C1 (pF)	R1 ( $\Omega$ )	R2 Nominal DCR of winding ( $\Omega$ )
DRA74-R33-R	0.288	253.2	1.37	420.56	0.0054
DRA74-1R0-R	0.897	128.1	1.72	1399.08	0.0078
DRA74-1R5-R	1.31	102.1	1.86	2351.65	0.0092
DRA74-2R2-R	2.33	72.2	2.08	4304.61	0.012
DRA74-3R3-R	3.1	60.9	2.21	5564.35	0.016
DRA74-4R7-R	4.68	47.5	2.40	7823.36	0.024
DRA74-6R8-R	6.5	39.0	2.56	10087.60	0.034
DRA74-8R2-R	8.5	33.2	2.70	12311.10	0.04
DRA74-100-R	9.62	30.9	2.77	13468.57	0.043
DRA74-150-R	15.1	23.5	3.03	18521.75	0.067
DRA74-220-R	22.3	18.6	3.27	24188.20	0.1
DRA74-330-R	33	14.7	3.54	31446.46	0.151
DRA74-470-R	47	11.9	3.80	39694.92	0.219
DRA74-680-R	68	9.5	4.09	50476.42	0.286
DRA74-820-R	81.5	8.6	4.24	56735.70	0.367
DRA74-101-R	98.5	7.6	4.41	64081.33	0.419
DRA74-151-R	151	5.9	4.80	84182.63	0.648
DRA74-221-R	219	4.7	5.17	106576.75	0.96
DRA74-331-R	329	3.7	5.61	137798.11	1.5
DRA74-471-R	472	3.0	6.03	172907.51	1.93
DRA74-681-R	683	2.4	6.49	217992.02	2.86
DRA74-821-R	815	2.2	6.72	243484.89	3.63
DRA74-102-R	1000	1.9	7.00	276707.84	4.19



**Figure 1.** Equivalent circuit

## Disclaimer

The data provided is for reference and is intended for evaluation purposes only. Users should verify all intended results in the end application.

**Eaton**  
**Electronics Division**  
 1000 Eaton Boulevard  
 Cleveland, OH 44122  
 United States  
[www.eaton.com/electronics](http://www.eaton.com/electronics)

© 2018 Eaton  
 All Rights Reserved  
 Printed in USA  
 Publication No. DRA74 Spice  
 April 2018